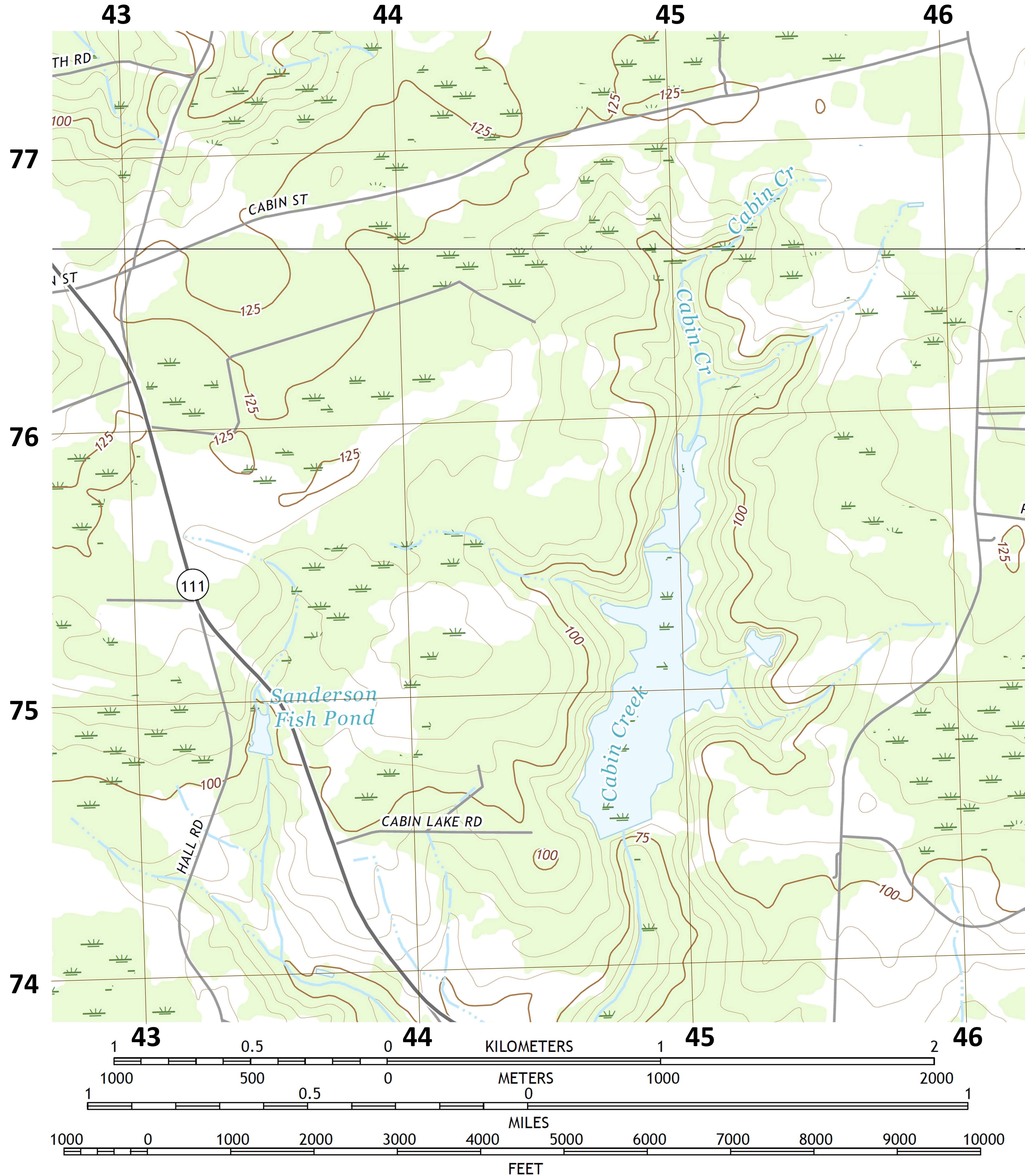


# Cabin Lake, Duplin County Park Special

For use in teaching map reading, orienteering, and land navigation. Covers area around Cabin Lake Park, a Duplin County Park. Built from using USGS base maps. Use in coordination with smaller handout maps. For more information, text 703-203-8461.



**ROAD CLASSIFICATION**

Expressway		Local Connector	
Secondary Hwy		Local Road	
Ramp		4WD	
	Interstate Route		US Route
	State Route		

ALBERTSON QUADRANGLE  
 NORTH CAROLINA  
 7.5-MINUTE SERIES

BEULAVILLE QUADRANGLE  
 NORTH CAROLINA - DUPLIN COUNTY  
 7.5-MINUTE SERIES

CONTOUR INTERVAL 5 FEET  
 NORTH AMERICAN VERTICAL DATUM OF 1988

76

75

74

UTM GRID AND 2019 MAGNETIC NORTH

9°40'  
 172 MILS  
 1°37'  
 29 MILS

**U.S. National Grid**  
 100,000 - m Square ID

TD

Grid Zone Designation  
 18S



QUADRANGLE LOCATION

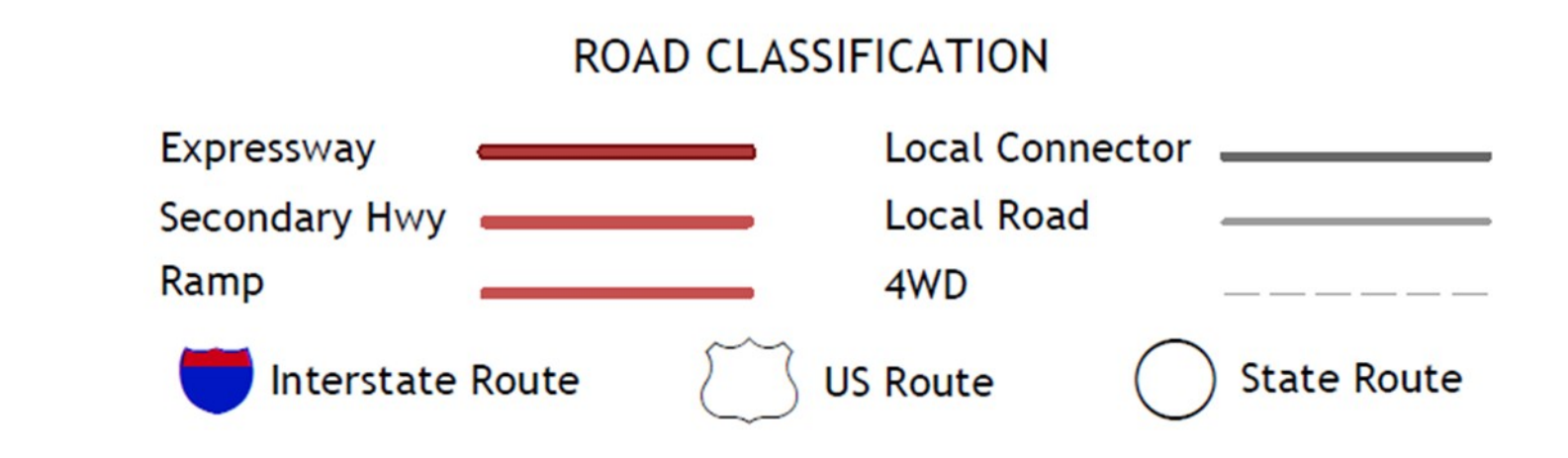
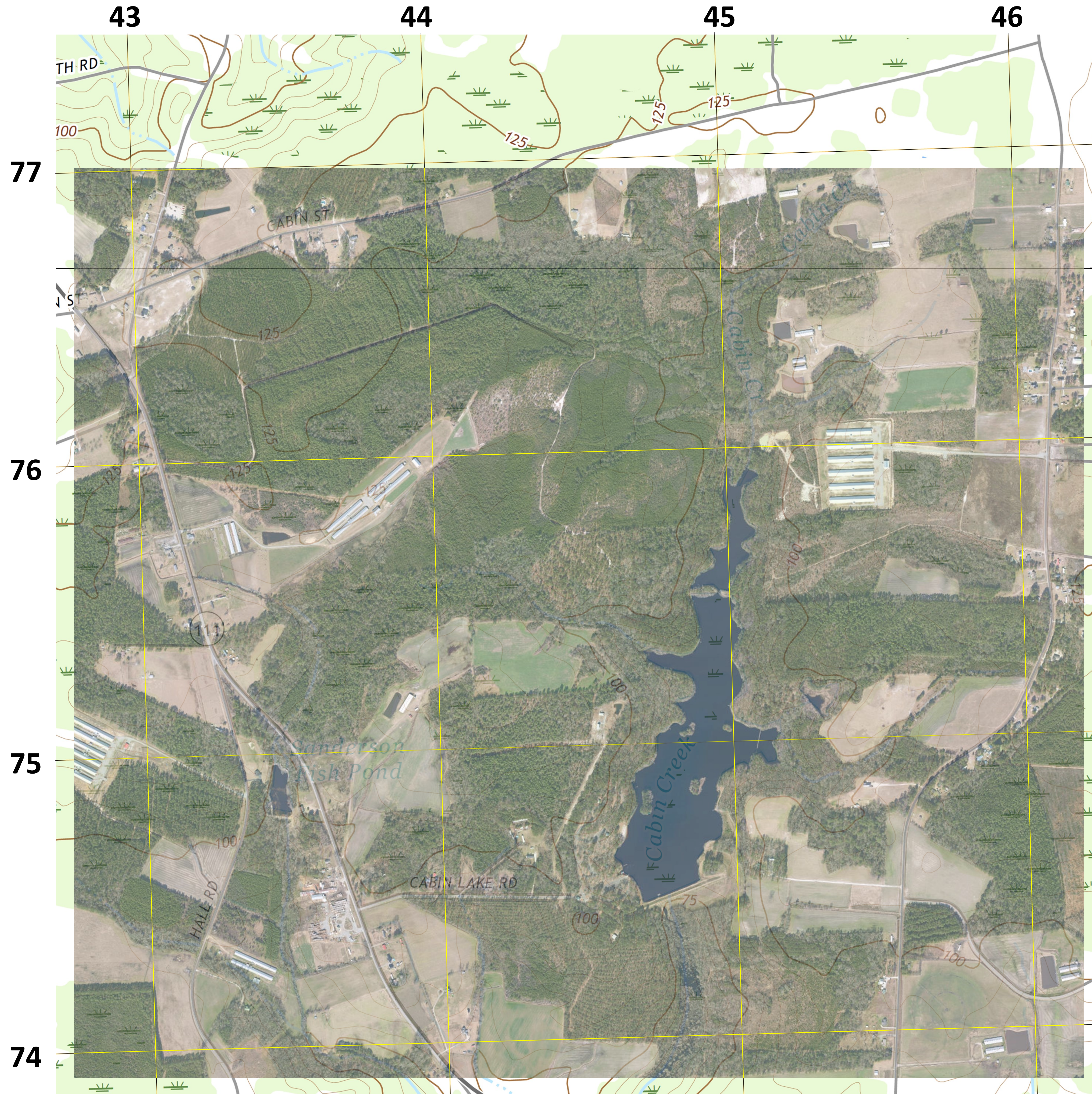
1	2	3
4	5	6
7	8	

- 1 Summerlins Crossroads
- 2 Albertson
- 3 Pink Hill
- 4 Kenansville
- 5 Potters Hill
- 6 Charity
- 7 Chinquapin
- 8 Lyman

ADJOINING QUADRANGLES

# Cabin Lake, Duplin County Park Special

For use in teaching map reading, orienteering, and land navigation. Covers area around Cabin Lake Park, a Duplin County Park. Built from using USGS base maps. Use in coordination with smaller handout maps. For more information, text 703-203-8461.



ALBERTSON QUADRANGLE  
 NORTH CAROLINA  
 7.5-MINUTE SERIES

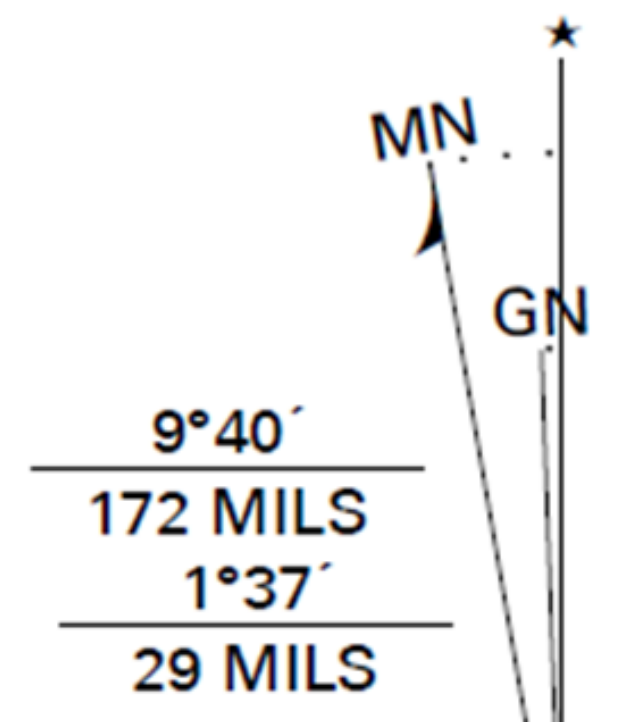
BEULAVILLE QUADRANGLE  
 NORTH CAROLINA - DUPLIN COUNTY  
 7.5-MINUTE SERIES

CONTOUR INTERVAL 5 FEET  
 NORTH AMERICAN VERTICAL DATUM OF 1988

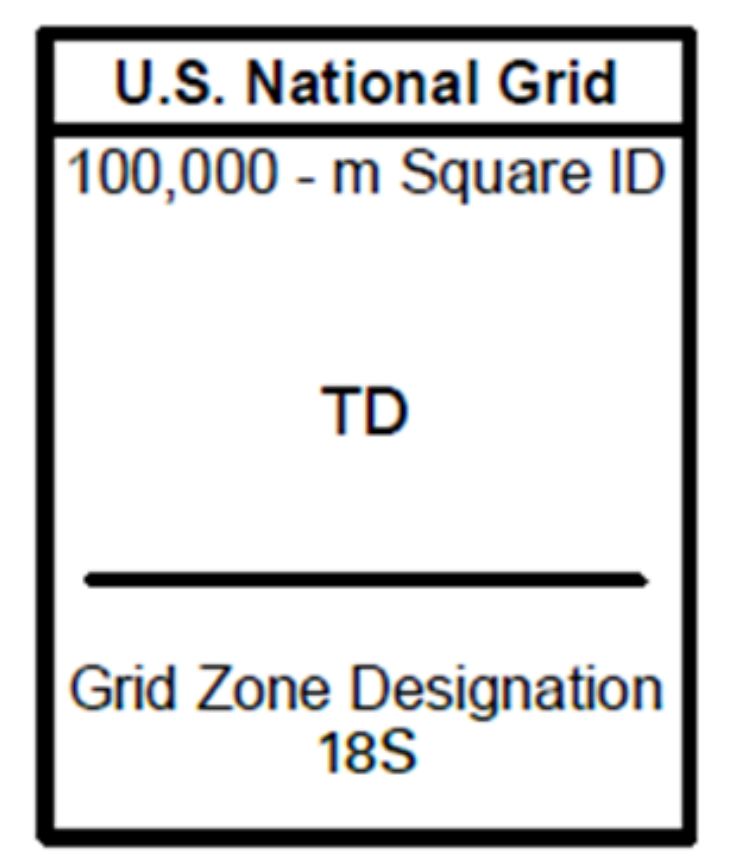
76

75

74



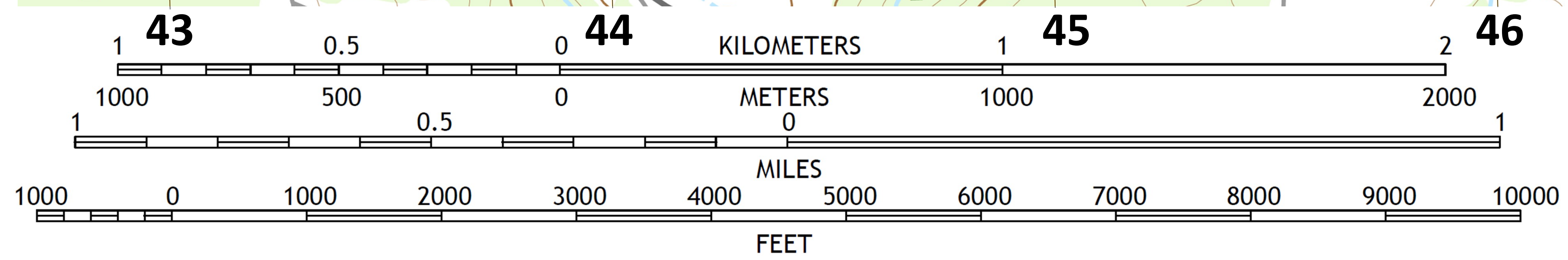
UTM GRID AND 2019 MAGNETIC NORTH

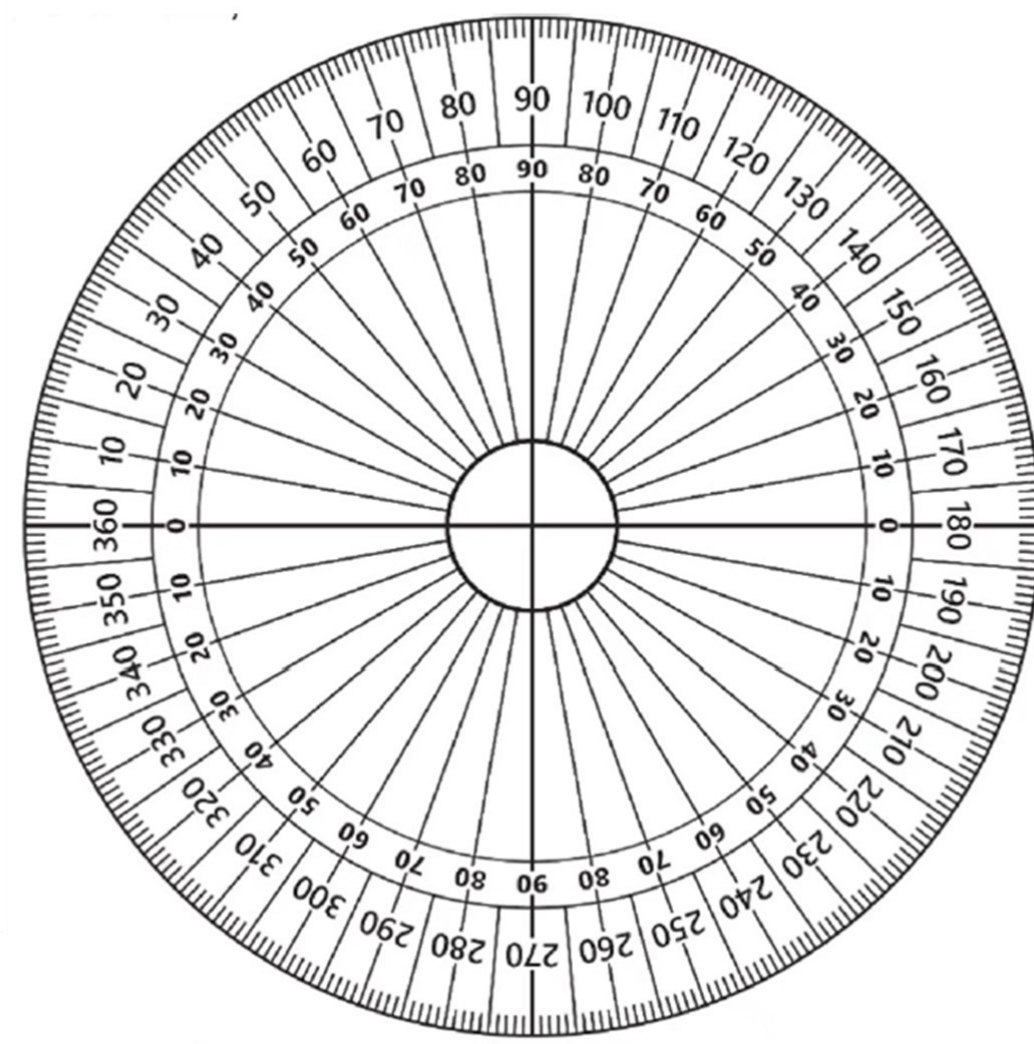
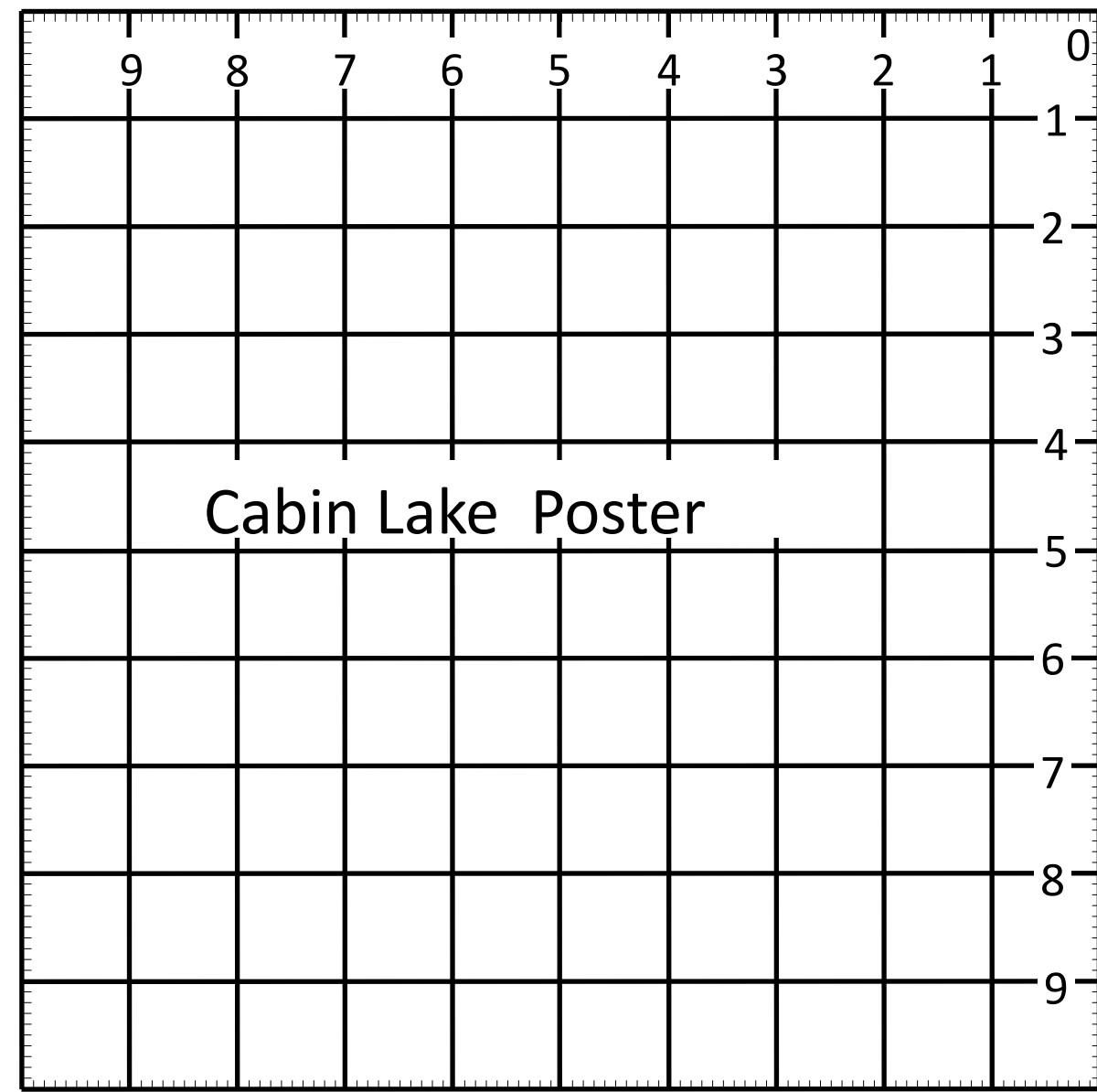


QUADRANGLE LOCATION

1	2	3	1 Summerlins Crossroads
4	5	6	2 Albertson
6	7	8	3 Pink Hill
			4 Kenansville
			5 Potters Hill
			6 Charity
			7 Chinquapin
			8 Lyman

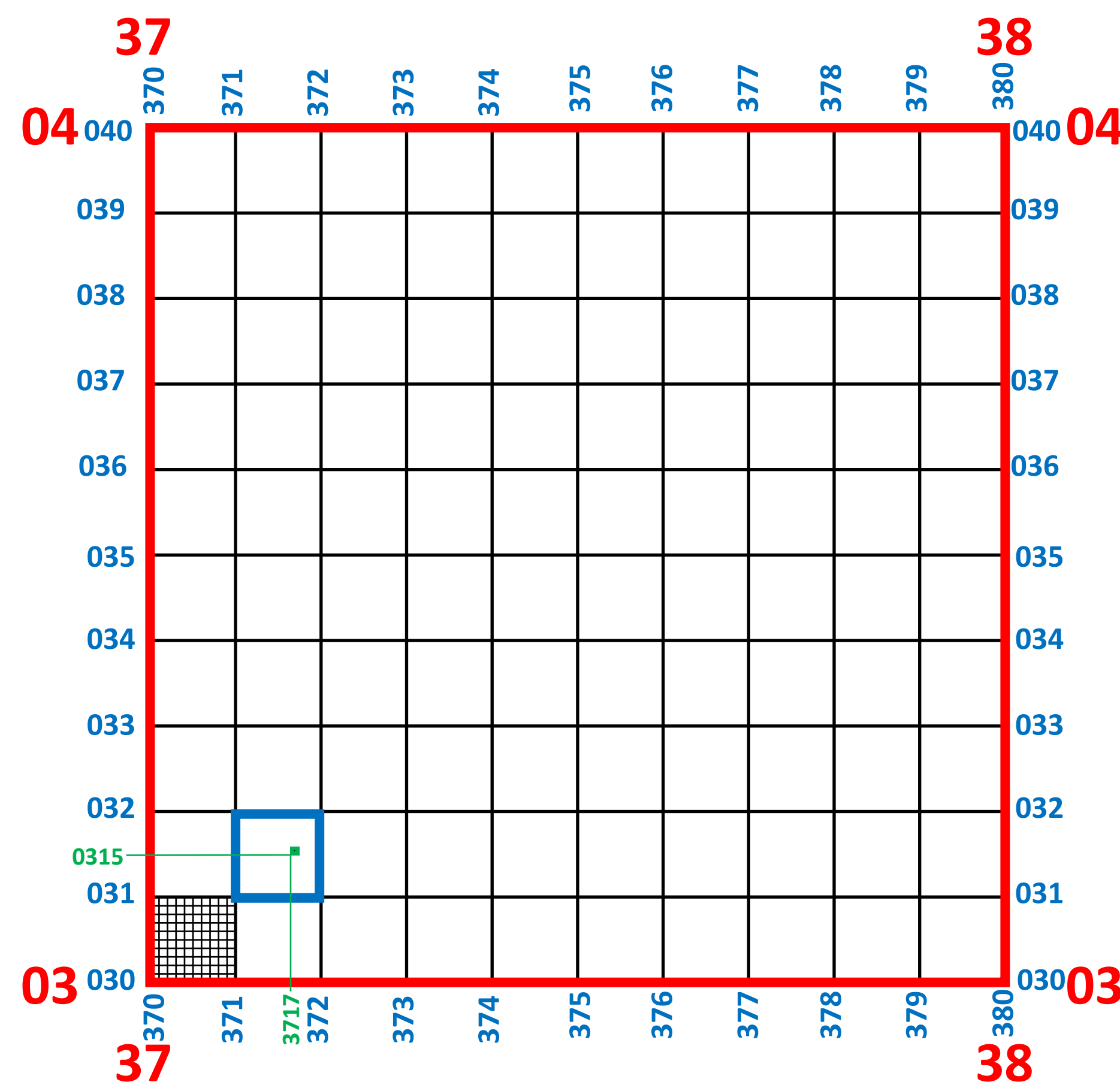
ADJOINING QUADRANGLES





Place upper right corner (0) of this protractor at the lower left corner of four digit grid square. Then slide protractor right until you reach the third and fourth digit of first half of grid coordinates. Then slide protractor up until you reach the third and fourth digit of second half of grid coordinate. The upper right corner of protractor (0 point) now rests at the eight digit grid location. If 10 digit grid, approximate the fifth digits to refine your plotting of the grid.

**Ensure your protractor remains parallel with grid square lines on the map.**



- 2 Digit Grid: Within 10,000 meters** 18S TE 3 0
- 4 Digit Grid: Within 1,000 meters** 18S TE 37 03
- 6 Digit Grid: Within 100 meters** 18S TE 371 031
- 8 Digit Grid: Within 10 Meters** 18S TE 3715 3717
- 10 Digit Grid: Within 1 meter** 18S TE 37155 37175